



## TRANSFER GUIDE





## THIS IS YOUR TIME TO SHINE AT BAYLOR.

On this campus, academic excellence is elevated, a Christian commitment is celebrated, research is cultivated, and the Baylor Family welcomes every student with open arms.

As a Research 1 (R1) institution, Baylor continues to light the way as one of 146 institutions representing the top research universities in the nation and pursuing research solutions to the most difficult challenges.

So take an illuminating tour through these pages, then follow your path to Baylor.

  
 *Baylor University*

## OUR MISSION

To educate men and women for worldwide leadership and service by integrating academic excellence and Christian commitment within a caring community.

# IN THESE PAGES

**2-3** // About Baylor

**4** // Why Baylor?

**5** // Finding Your Place

**6-7** // Majors & Minors

**8-9** // Engagement

**10-11** // Traditions

**12-13** // Athletics

**14-15** // Applying for Admission

**16-17** // Costs & Financial Aid

**18-19** // Backing Your Success

**20** // Explore Waco

**21** // Visit Baylor

Baylor University





# THE GIL TODD SPOOLS

FOUNDED IN 1845

LOCATED IN WACO, TEXAS

AWARD-WINNING CAMPUS ON 1K ACRES\*

▶ 15,155

undergraduates

▶ 15:1

student-to-faculty ratio

▶ 26

average class size

▶ 100+

countries represented

▶ 94%

of undergraduate classes are taught by Baylor professors (not grad assistants) who both teach and perform research in their fields

▶ 87%

of 2023's entering transfer students had a cumulative 3.0 GPA or higher

▶ 41%

of 2023's entering transfer students identify as belonging to a racial minority population

▶ 31%

of 2023's entering transfer students are first-generation college students

▶ 32%

of 2023's entering transfer students are from outside the state of Texas



## TOP100

CONSISTENTLY RANKED IN THE TOP 100 OF  
AMERICA'S BEST COLLEGES  
- U.S. NEWS & WORLD REPORT 2023-2024



## SUPERIOR ACADEMICS

## NATIONALLY RANKED

- ▶ **#6**  
Entrepreneurship Program  
- *The Princeton Review* 2024
- ▶ **#8**  
Entrepreneurship Program  
- *U.S. News & World Report* 2023-2024
- ▶ **#13**  
Most Sought-After College  
- *Bold.org* 2022
- ▶ **#10**  
Learning Communities  
- *U.S. News & World Report* 2023-2024
- ▶ **#22**  
Best Undergraduate Teaching  
- *U.S. News & World Report* 2023-2024
- ▶ **#38**  
Most Innovative Schools  
- *U.S. News & World Report* 2023-2024
- ▶ **#21**  
Undergraduate Research/Creative Projects  
- *U.S. News & World Report* 2023-2024
- ▶ **#31**  
Best Undergraduate Nursing Program  
- *U.S. News & World Report* 2023-2024
- ▶ **#62**  
Best Undergraduate Business Program  
- *U.S. News & World Report* 2023-2024
- ▶ **#115**  
Best Value School  
- *U.S. News & World Report* 2023-2024
- ▶ **1 of 39**  
private R1 institutions
- ▶ **"A"**  
grade for core curriculum  
- *American Council of Trustees and Alumni*



# WHY BAYLOR?

BAYLOR IS THE ONLY PRIVATE UNIVERSITY WITH R1 STATUS, MAJOR ATHLETICS AND A PROTESTANT FAITH-BASED IDENTITY. [BAYLOR.EDU/UNDERGRADRESEARCH](https://baylor.edu/undergradresearch)



## RESEARCH (R1)

Top-tier research makes Baylor a more appealing destination for top faculty and students, provides more grants and industry partners for Baylor research and increases the value of Baylor graduates' degrees.



## D1 ATHLETICS

Experience the excitement of a championship-winning university competing in the Big 12 and at the national level!



## MID-SIZE UNIVERSITY

The rigorous academics and state-of-the-art resources of a large university without the large class sizes — Baylor professors will know you by name.



## DISTINCTLY CHRISTIAN

As a community of faith and service, Baylor believes in cultivating character while you build your future — both on campus and off.





# FINDING YOUR PLACE

Transfer students have the choice to live either on or off campus. On-campus living options consist of Living-Learning Communities, which are organized around specific academic programs or areas of interest, and the Upper-Division Community at University Parks, which offers students the amenities of an apartment with the resources of on-campus housing.

Baylor's Campus Living and Learning staff can help you determine if on-campus housing is right for you. Learn more at [baylor.edu/CLL](https://baylor.edu/CLL).

Visit [baylorareahousing.com](https://baylorareahousing.com) for guidance on finding off-campus options, including apartment listings, help in finding a roommate and essential things to consider when signing a lease and living off-campus.

# MAJORS + MINORS

## ARTS

Apparel Design & Product Development<sup>†</sup>  
Apparel Merchandising

Art History  
Interior Design<sup>†</sup>  
Studio Art

Theatre Arts<sup>†</sup>  
Theatre Design & Technology

Theatre Performance<sup>†</sup>

## BUSINESS

Accounting<sup>†</sup>  
Advertising\*  
Business Administration\*  
Business Fellows<sup>†‡</sup>  
Corporate Communication\*

Economics  
Entrepreneurship & Corporate Innovation  
Finance<sup>†</sup>  
Human Resource Management<sup>†</sup>

International Business<sup>†</sup>  
Management<sup>†</sup>  
Management Information Systems<sup>†</sup>  
Marketing<sup>†</sup>

Media Management\*  
Nonprofit Marketing\*  
Professional Selling<sup>†</sup>  
Risk Management & Insurance<sup>†</sup>  
Supply Chain Management<sup>†</sup>

## COMMUNICATIONS

Communication<sup>†</sup>  
Communication Specialist<sup>†</sup>  
Creative Writing\*

Film & Digital Media  
Film Theory and Criticism\*  
Journalism

News Editorial\*  
Photojournalism\*  
Professional Writing & Rhetoric<sup>†</sup>

Public Relations\*  
Rhetoric & Public Discourse\*

## EDUCATION

Educational Psychology\*  
Elementary (PreK-6)<sup>†Δ</sup>  
Informal Education\*  
Middle Grades (4-8)<sup>†</sup>  
> English, Language Arts & Reading<sup>†Δ</sup>  
> Mathematics<sup>†Δ</sup>

> Science<sup>†Δ</sup>  
> Social Studies<sup>†Δ</sup>  
Secondary Education  
> English, Language Arts & Reading<sup>†Δ</sup>  
> Life Sciences<sup>†Δ</sup>  
> Mathematics<sup>†Δ</sup>

> Physical Sciences<sup>†Δ</sup>  
> Social Studies<sup>†Δ</sup>  
All Level (K-12)  
> Spanish<sup>†Δ</sup>  
> Physical Education<sup>†Δ</sup>  
> Special Education<sup>†Δ</sup>

Certification Programs  
> Deaf Education<sup>Δ</sup>  
> English as a Second Language<sup>Δ</sup>  
> Gifted & Talented<sup>†Δ</sup>

## ENGINEERING & COMPUTER SCIENCE

Computer Engineering  
Computer Science  
Computer Science Fellows<sup>†‡</sup>

Cybersecurity  
Data Science  
Electrical & Computer Engineering<sup>†</sup>

Engineering  
Mechanical Engineering<sup>†</sup>



Find the major that best fits your interests and goals: [baylor.mymajors.com/quiz](https://baylor.mymajors.com/quiz)

Explore Baylor's majors: [baylor.edu/majors](https://baylor.edu/majors)

## HUMANITIES

African Studies*	Criminal Justice*	International Studies	Philosophy
American Sign Language*	Dance*	Italian*	Political Science
American Studies	English	Japanese*	Poverty Studies & Social Justice*
Anthropology	French	Latin	Religion
Arabic*	German	Latin American Studies	Russian
Arabic & Middle East Studies†	Gerontology*	Leadership in Medicine*	Slavic & East European Studies†
Archaeology*	Great Texts of the Western Tradition	Leadership Studies*	Social Work†
Asian Studies	Greek	Legal Reasoning & Analysis*	Sociology
Child & Family Studies	Greek & Roman Studies	Linguistics	Spanish
Chinese*	History <sup>Δ</sup>	Middle East Studies*	University Scholars††
Civic Interfaith Studies*	Humanities Research Fellows††	Military Studies*	Women's & Gender Studies*
Classics		Museum Studies	World Affairs*

## MATH & SCIENCES

Aerospace Studies*	Chemistry	General Family & Consumer Sciences	Nutrition Sciences
Applied Mathematics†	Communication Sciences & Disorders†	Geosciences	Outdoor Education & Leadership*
Astronomy	Earth Science	Health, Kinesiology, & Leisure Studies†	Physics <sup>Δ</sup>
Astrophysics	Environmental Health Science†	Health Science Studies† <sup>Δ</sup>	Psychology†
Aviation Administration††	Environmental Humanities*	Mathematics <sup>Δ</sup>	Public Health†
Aviation Sciences‡	Environmental Science†	Medical Humanities	Recreation†
Biochemistry	Environmental Studies	Neuroscience†	Recreation Ministry*
Bioinformatics†	Exercise Physiology†	Nursing†	Science Research Fellows††
Biology <sup>Δ</sup>	Forensic Science*		Statistics
Botany*			

## MUSIC

Choral Music† <sup>Δ</sup>	Music History & Literature†
Church Music	Pedagogy†
Composition†	Performance†
Instrumental Music† <sup>Δ</sup>	Theory†
Music <sup>Δ</sup>	

## PRE-PROFESSIONAL PROGRAMS

Pre-professional programs are career aspirations. You will also select a major.

Pre-Dentistry	Pre-Pharmacy
Pre-Law	Pre-Physical Therapy
Pre-Medicine	Pre-Physician Assistant
Pre-Occupational Therapy	Pre-Podiatry
Pre-Optometry	Pre-Veterinary Medicine



Baylor students often discover their strengths and their passions by joining an organization, attending campus events or enjoying campus traditions. Late Night, an event held at McLane Stadium at the beginning of the fall semester, gives new Bears the opportunity to meet student leaders from Baylor's student organizations and offers games, free food and prizes. Plus, Baylor's Student Involvement Specialists are trained to help find the best options for you based on your passions, interests and calling.

[baylor.edu/studentactivities](https://baylor.edu/studentactivities)

▶ 70%

of students are involved in a student organization

▶ 400

student organizations

▶ 10,000+

student organization events each year

▶ #5

First-Year Experiences

- U.S. News & World Report 2023-2024

▶ #4

Student Engagement

- The Wall Street Journal/Times Higher Education Rankings 2022

▶ #4

"Happiest College in the U.S."

- Resume.io 2023





# CAMPUS RESOURCES

09



## MULTICULTURAL AFFAIRS

The Department of Multicultural Affairs (MA) enriches the development of each student by encouraging them to celebrate their personal heritage and embrace the cultures of others. We are proud to sponsor and support:

- The Black Student Coalition
- The Coalition of Asian Students
- The Latinx Coalition
- More than 50 multicultural organizations
- The Trailblazer Scholars Program
- Opportunities for identity development, cultural humility and student organization leadership

For more information, visit [baylor.edu/multicultural](https://baylor.edu/multicultural).

## FIRST IN LINE

Our First in Line office provides support, resources and scholarships for our first-generation college students to help them navigate Baylor successfully. We also provide you with an additional layer of support through programs like:

- The First in Line Student Society
- Ambassador one-on-one meetings
- The First in Line Success Academy scholarship program

We strive to support, empower and celebrate our first-generation students! For more information, visit [baylor.edu/firstinline](https://baylor.edu/firstinline).



## VETS

The Baylor VETS Program supports all our military-connected students and their transition to and through Baylor University. We work to achieve this goal for this valued population through fostering engaged community, providing strategic tailored support and offering opportunities to participate in our mission of servant leadership! Learn more about our services and specialized opportunities at [baylor.edu/VETS](https://baylor.edu/VETS).



# TRADITIONS



**STOMP FEST** In this all-university step show, groups perform routines to compete for prize money benefitting their unique philanthropy.



**¡FIESTA!** A cultural celebration of the diverse cultures of Latin America through cuisine, art, music and performances.



**SING** Student groups compete for bragging rights in this annual Broadway-style music and dance show.



**HOME COMING** Baylor is believed to have the nation's oldest and largest Homecoming celebration. Students and alumni enjoy events, such as a bonfire, parade, Pigskin Revue and home football game.



**THANKSGIVING DINNER** One of the most attended on-campus Baylor traditions, this dinner is a time for students, faculty and staff to come together to enjoy food, games, entertainment and fellowship with the rest of the Baylor community.



**DR PEPPER HOUR** Each week since 1953, students, faculty and staff have come together to socialize and enjoy Dr Pepper floats during Dr Pepper Hour.





**THE BAYLOR LINE** This spirit organization, made up of new students, wears signature gold jerseys as they run on the field at all home football games.



11

**CHRISTMAS ON 5<sup>TH</sup> STREET** A joyful celebration that includes an annual tree lighting, caroling, a live nativity scene and special musical guests.



**MOSAIC WEEK** The diverse cultures of Baylor students are highlighted through a series of events, including a student organization fair and cultural showcase, hosted by the Department of Multicultural Affairs.



**LUNAR NEW YEAR** Students ring in the Lunar New Year with live performances, music, free food and the opportunity to learn about many Asian and Chinese traditions.



**DIADELOSO** Since 1932, students have been given a day off in spring to enjoy the outdoors. Diadeloso, or "Day of the Bear," features athletic tournaments, activities, live music and free food.



**HOLI FESTIVAL** Each year, Baylor's Indian Subcontinent Student Association (ISSA) invites students to observe Holi, a festival of colors that celebrates the advent of spring while showering participants in colorful powders.



**WELCOME WEEK** New Baylor Bears enjoy opportunities to connect with other incoming and returning students.



## D-1

Men's Baseball      Men's Golf  
 Men's Basketball      Men's Tennis  
 Men's Cross Country      Men's Track & Field  
 Men's Football

Women's Acrobatics & Tumbling      Women's Soccer  
 Women's Basketball      Women's Softball  
 Women's Cross Country      Women's Tennis  
 Women's Equestrian      Women's Track & Field  
 Women's Golf      Women's Volleyball

## CLUB

Baseball      Lacrosse      Taekwondo  
 Basketball      Ping-Pong      Tennis  
 Crew      Quidditch      Triathlon  
 Cycling      Rock Climbing      Ultimate Frisbee  
 Disc Golf      Roundnet      Volleyball  
 Fencing      Rugby      Wakeboard  
 Golf      Sailing      Water Polo  
 Gymnastics      Soccer      Water Ski  
 Ice Hockey      Softball  
 Kendo      Swimming

## INTRAMURAL

Basketball      Racquetball      Track Meet  
 Bowling      Soccer      Ultimate Frisbee  
 Dodgeball      Softball      Volleyball  
 Flag Football      Spikeball      Wallyball  
 Golf      Swim Meet      Wiffle Ball  
 Kickball      Table Tennis  
 Pickleball      Tennis







# BIG 12 SPORTS

**LOOKING FOR THE THRILL OF GAME DAY?** AS A CHARTER MEMBER OF THE BIG 12 CONFERENCE, BAYLOR OFFERS THE FUN AND EXCITEMENT OF DIVISION 1 ATHLETICS!



## CHAMPIONSHIPS

9 Consecutive Acrobatics  
& Tumbling National  
Championship Titles

2022 Big 12 Men's Tennis  
Champions

2022 Sugar Bowl Champions

2021 Big 12 Football  
Champions

2021 NCAA Men's Basketball  
National Champions

2021 Men's Tennis Big 12  
Champions

2021 Women's Basketball  
Big 12 Champions

**BAYLORBears.COM**



## TRANSFER ADMISSION REQUIREMENTS

- We look for applicants with a successful academic record who demonstrate preparedness for the rigors of a Baylor education.
- While the minimum cumulative GPA for most majors is a 2.75, some majors have specific academic requirements. Learn more at [baylor.edu/majorrequirements](https://baylor.edu/majorrequirements).
- You must be eligible to return to any college or university you have attended.
- Plan to transfer no later than the end of your sophomore year. To receive a Baylor degree, at least 60 hours must be earned in residence at Baylor including the last 30, and you can transfer up to a maximum of 70 hours before your first semester at Baylor.
- If you have fewer than 24 completed credit hours at the time of your application submission, you must also submit your final high school transcript. Baylor does not review or grant course exemptions based on TSI Assessment Scores.
- You may be eligible to receive credit by exam. Visit [baylor.edu/studenttesting](https://baylor.edu/studenttesting) for more information.

### MEET YOUR COUNSELOR

If you're looking to talk about all things Baylor and the admissions process, visit [baylor.edu/meet](https://baylor.edu/meet) to connect with your Admissions Counselor, ask questions and/or schedule a time to meet one-on-one. If you feel more comfortable speaking in a language other than English, please contact [admissions@baylor.edu](mailto:admissions@baylor.edu) to connect with one of our bilingual counselors, who are happy to assist you.

## TIPS FOR TRANSFERS

### ▶ TRANSFERRING CREDIT

Baylor accepts transfer credits from regionally or nationally accredited and international institutions. To receive credit, you must earn a C or higher and Baylor must have an equivalent course. Learn more and use our Equivalent Course Tool at [baylor.edu/transferecredit](https://baylor.edu/transferecredit).

### ▶ TRANSFER ADVISING POINTS OF CONTACT

Connect with a Transfer Advising point of contact in whichever college or school you're interested in, even before coming to campus! They can speak with you about your academic area(s) of interest and help you determine how your credits might transfer to estimate your timeline to graduation. Learn more at [baylor.edu/transfercontact](https://baylor.edu/transfercontact).

### ▶ OFFICE OF TRANSFER STUDENT SUCCESS

Transferring comes with a unique set of challenges that not everyone can understand. Whether you are a new transfer, have been at Baylor for a while or are just weighing your transfer options, the Office of Transfer Student Success can help you out and help you find a place to socially connect, encourage you to get the academic support you need and help you find where you belong at Baylor! Learn more at [baylor.edu/transfersuccess](https://baylor.edu/transfersuccess).



If you've been accepted to Baylor, you can jump start your academic pursuits at the university. We make it easy for incoming students to begin classes during the summer with our discounted Summer of Discovery courses. Find out more at [baylor.edu/jumpstart](https://baylor.edu/jumpstart).



# APPLICATION PROCESS



**1.** Most transfer students have the freedom to choose to enter Baylor during fall, spring OR summer semesters. Contact your academic department for more information on recommended entry terms and visit [baylor.edu/transfer](https://baylor.edu/transfer) to view deadlines.



**2.** Decide which free application you want to use to start your application file:

Baylor Online Application:

[baylor.edu/gobaylor](https://baylor.edu/gobaylor)

Common App: [commonapp.org](https://commonapp.org)

ApplyTexas: [applytexas.org](https://applytexas.org)

Regardless of your application choice, your goBAYLOR account will be important for tracking your application status and any next steps you might have.



**3. Key documents must be postmarked by the application deadline.** The key documents required will vary based on the number of credit hours a student has already completed at the time they submit their application.

- a. If you will have more than 24 credit hours earned after high school graduation when you apply, you must submit:
  - Official transcripts from each college you've attended, reporting the final grades for all classes you've attempted for each semester enrolled.

b. If you will have less than 24 credit hours earned after high school graduation when you apply, you must submit:

- An official final high school transcript with a clearly marked graduation date.
- Official transcripts from each college you've attended, reporting final grades for all classes you've attempted for each semester enrolled.



**4.** To be considered for the maximum amount of financial aid, you must submit both the Free Application for Federal Student Aid (FAFSA) and the College Scholarship Service (CSS) Profile.



**5.** Additional steps might be required or recommended based on your individual circumstances. For more details about these items, check your goBAYLOR account at [baylor.edu/gobaylor](https://baylor.edu/gobaylor).



There are many ways to make a Baylor education fit your family's budget. Very few students pay the full cost of tuition, and most students are able to fund their education through various scholarships, financial aid, loans and payment plans. More than 90% of students receive financial aid, and over 84% receive merit scholarships. Explore all the ways to fund your Baylor education at [baylor.edu/typesofaid](https://baylor.edu/typesofaid).

### OPTION 1: MERIT-BASED SCHOLARSHIPS

Your comprehensive academic record and a full review of your completed Baylor application file determine your eligibility for a Baylor merit-based scholarship. No additional application is required. All applicants are considered for merit-based scholarships when they apply, including students who apply as test optional.

### OPTION 2: FINANCIAL AID

To be considered for the maximum amount of financial aid, you must SUBMIT BOTH the **Free Application for Federal Student Aid (FAFSA)** at [studentaid.gov](https://studentaid.gov) and the **CSS Profile** at [cssprofile.collegeboard.org](https://cssprofile.collegeboard.org). Submitting these applications early allows you to be considered for the most available funds. For dates, deadlines and details, please visit [baylor.edu/typesofaid](https://baylor.edu/typesofaid).

*If you miss the final deadline, please submit an application as soon as possible to be considered for any remaining funds.*

**The FAFSA will determine your eligibility for:** grants, educational loans and federal work study.

**The CSS Profile** will determine your eligibility for institutional, need-based aid.

### OPTION 3: SPECIALTY BAYLOR AWARDS

Baylor offers a variety of specialty scholarships for students who meet specific qualifications (i.e. academic, athletics, denomination, departmental, event-based, extracurricular, first generation, leadership, military, transfers). Baylor can also help you process VA Education Benefits and participates in the Yellow Ribbon Program. Learn more about these awards at [baylor.edu/typesofaid](https://baylor.edu/typesofaid).

### OPTION 4: OUTSIDE SCHOLARSHIPS

We recommend you apply for as many outside/private scholarships as possible. These might include scholarships offered by local businesses or service/religious organizations. Your school counselor should be able to assist you in determining what is available in your community. Accepted students can explore millions of dollars worth of outside scholarship options with our Scholarship Universe database.

### OPTION 5: PAYMENT PLANS

Baylor offers an installment plan that allows you to pay your out-of-pocket cost each semester in five monthly payments. You can learn more about this option at [baylor.edu/sfs/installment](https://baylor.edu/sfs/installment).

**PRO TIP:** Some questions will be the same on the FAFSA and CSS Profile. Make sure you answer consistently, or your award package will be delayed until conflicting information is resolved.



# INCLUDED WITH YOUR TUITION

[baylor.edu/campusresources](https://baylor.edu/campusresources)



## STUDENT LIFE

- Free Athletics Tickets!
- Student Activities & Events
- Time-Honored Traditions
- Spiritual Life Enrichment



## STUDENT SUCCESS

- Career Advising
- Major Exploration & Degree Planning Support
- Personalized Academic Support & Tutoring
- Access & Learning Accommodation
- Student Transportation



## MENTAL & PHYSICAL WELLBEING

- 24/7 Mental Health Counseling Services
- McLane Student Life Center
- Pullin Family Marina
- On Campus Health Center & Pharmacy

## UNDERGRADUATE COSTS // '24 -'25

TUITION .....\$58,100

FOOD AND HOUSING .....\$15,924

Remember that you also need to budget for personal expenses, books and supplies, and transportation. International students are also required to have health insurance.

To see a sample budget that includes direct and indirect costs, visit [baylor.edu/sfs/coa](https://baylor.edu/sfs/coa).

## VA BENEFITS

Baylor University participates in various VA Education Benefit Programs, including the Yellow Ribbon Program, which covers 100% of your annual tuition and fees if you're eligible! Learn more at [baylor.edu/vabenefits](https://baylor.edu/vabenefits).





The mission of the Baylor University Career Center is to ensure that every student has the opportunity and support to achieve their career potential, beginning the first semester of their Baylor journey.

DEDICATION

Every Baylor student has access to their own dedicated Career Success Professional (CSP) who is ready to help identify that student's career interests, strategize job, internship and graduate school searches, craft résumés, and prepare them for networking events or interviews.

PREPARATION

The Career Center offers Professional Development courses that allow students to explore their career interests and opportunities, learn about available career resources, practice career-oriented skills and get ahead in their career plans long before they graduate.

For more information, visit [baylor.edu/careercenter](https://baylor.edu/careercenter).

THE CAREER CENTER, 2023 ACADEMIC YEAR:

▶ 300+  
events throughout the year, including career fairs, information sessions, class presentations and networking opportunities

▶ 8,035  
career coaching appointments

▶ 11,351  
unique employers actively recruit at Baylor

▶ 5%  
increase in overall placement rate in the past two years

▶ 89,006  
jobs in Handshake, our career database

▶ 29,321  
internships in Handshake, our career database

TOP EMPLOYERS

3M	IBM
49 FINANCIAL	INTEL
ACADEMY SPORTS + OUTDOORS	JPMORGAN CHASE & CO.
ACCENTURE	KPMG
ACTION BEHAVIOR CENTERS	L3HARRIS
ALIGHT SOLUTIONS	LOCKHEED MARTIN
ALLERGAN	MICROSOFT
ALLSTATE	MULTIVIEW
AMAZON	NORTHWESTERN MUTUAL
ASCENSION	ORACLE
AT&T	PAYCOM
BANK OF AMERICA	PEACE CORPS
BAYLOR SCOTT & WHITE HEALTH	PHILLIPS 66
BAYLOR UNIVERSITY	PROSCRIBE
BDO	PROTIVITI
BIRDEYE	PSC BIOTECH
BP	PWC
THE BRANDT COMPANIES	RAYTHEON
CALL BOX	ROBIN HEALTHCARE
CHEVRON PHILLIPS CHEMICAL	SCRIBEAMERICA
CHICK-FIL-A	SENDERO PROVISIONS CO.
CONOCOPHILLIPS	SEWELL
CREDERA	SHELL
DELL	SPACEX
DELOITTE	TEXAS FARM BUREAU INSURANCE
ERNST & YOUNG	TEXAS INSTRUMENTS
EXXONMOBIL	TEXAS MOTOR SPEEDWAY
FIDELITY INVESTMENTS	TEXTRON INC.
FORVIS	THE WALT DISNEY COMPANY
GARTNER	U.S. AIR FORCE
GENERAL MOTORS	U.S. ARMY
GOLDMAN SACHS	WACO ISD
GOOSEHEAD INSURANCE	WHITLEY PENN
H-E-B	



# CAREER CONNECTIONS

“Hewlett Packard Enterprise (HPE) has enjoyed a long and successful recruiting relationship with Baylor University. We always marvel at the quality of the students we meet every year that embody the character of the University itself . . . **With the highest standards for character and talent so evident in Baylor graduates**, we look forward to building on our devoted investment at Baylor led through our relationship with the Career Center team.”

**Condell Clegg**, Hewlett Packard Enterprise



## SUCCESS AT BAYLOR

▶ **74%**  
acceptance rate into medical school for Baylor graduates

▶ **86%**  
acceptance rate to law school for graduating seniors

▶ **93%**  
of students find jobs or start graduate school within six months of graduation

▶ **3.66 AVERAGE GPA and 160.3 AVERAGE LSAT**  
score for Baylor seniors pursuing law school, which is above the national average





**Downtown Farmer's Market**



**Pullin Marina**



**Magnolia Market at the Silos**

# EXPLORE WACO

Located in the heart of Texas, Waco is a 90-minute drive from Austin or Dallas/Fort Worth. The Waco Regional Airport makes it easy to connect to flights out of Dallas. While you're visiting, don't forget to explore Waco's hot spots.

We've curated your entire Waco experience at [baylor.edu/whileinwaco](https://baylor.edu/whileinwaco).



**Cameron Park**



**TopGolf**



**Common Grounds**



# VISIT BAYLOR

Start your visit to our beautiful campus at the state-of-the-art Mark and Paula Hurd Welcome Center to experience the spirit, traditions and aspirations of the Baylor Family.

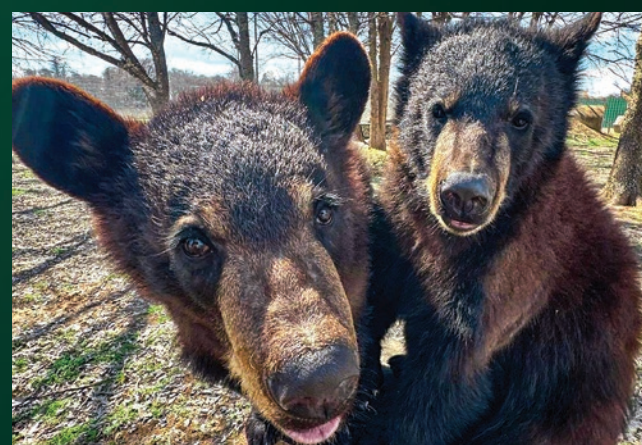
Campus tours are available Monday through Friday and select Saturdays. Learn more at [baylor.edu/waystoconnect](https://baylor.edu/waystoconnect). Or contact us at [visit@baylor.edu](mailto:visit@baylor.edu) or **(254) 710-TOUR (8687)** and let us help create a customized visit experience for you and your guests!



**McLane Stadium**



**Campus Tours**



**Visit Baylor Bears Indy & Belle!**





# BAYLOR HIGHLIGHTS

▶ Top 40 Colleges for Future Leaders

- *TIME Magazine 2024*

▶ 1 of just 8  
IN THE TOP 25 FOR  
best undergrad  
teaching & best  
undergrad research

- *U.S. News & World Report  
2023-2024*

▶ 8 top-25  
academic  
programs

- *U.S. News & World Report  
2022-2023*

▶ Fulbright Top  
Producing  
Institution

▶ No. 9 most trusted  
university by parents

- *Morning Consult 2024,  
a global research firm*

▶ #1 Prettiest College  
Campus in Texas,  
#14 in America

- *Architectural Digest 2024*



Baylor University

Join the mailing list at [baylor.edu/join](https://baylor.edu/join)



[transfer\\_admissions@baylor.edu](mailto:transfer_admissions@baylor.edu) // [baylor.edu/admissions](https://baylor.edu/admissions) // (254) 710-3435 // @BeABaylorBear